



## Application Note – Module\_03

### Signature Update

When the on-board signature and the signature file differ, waveforms that appear correctly when run from the graphical user interface may appear incorrectly when run from API-based applications. This application note contains the procedure to update the on-board signature from the signature file.

For AWG modules, this application note applies to AWG801, to all AWG472, to all AWG272, and to AWG452 with series numbers greater than 5, and it should be used with the [latest AWG setup files](#). For DSM modules, this application note applies to modules with series numbers greater than 29 and should be used with the [latest DSM setup files](#).

The signature file is called "AWGYYY\_SGN\_0XX.dat" or "DSMYYY\_SGN\_0XX.dat" where XX is your series number and AWGYYY or DSMYYY is your model number. This file allows you to switch clock frequencies without needing to adjust internal module settings for proper operation every time. It is usually generated in your program directory from the on-board signature when you first open the GUI or when you run any other API-based application. From the GUI, you may change the contents of the signature file.

The modules contain on-board signatures pre-loaded before delivery of the modules. Usually it is unnecessary to update the on-board signature. However, if the startup waveform appears to be incorrect, or if we advise you to update the signature, the following are instructions to update the on-board signature.

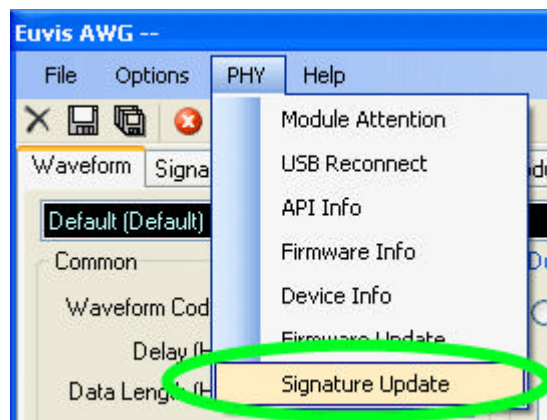
#### SIGNATURE UPDATE INSTRUCTIONS

Ensure that you have installed the latest software setup files. Provide the clock source, power source, and cooling fan. After you see the startup waveform, connect the USB cable between the module and your computer.

Open the GUI by double clicking the icon on the desktop. After you open the application, confirm that the number in the title bar matches the series number of your module.

Click on the PHY menu bar, and select Signature Update. This process irreversibly overwrites the existing on-board signature.

Wait about 10 seconds for the signature to finish updating. Now exit the GUI.



The on-board signature is now updated from the signature file, and you may resume operation of the module.